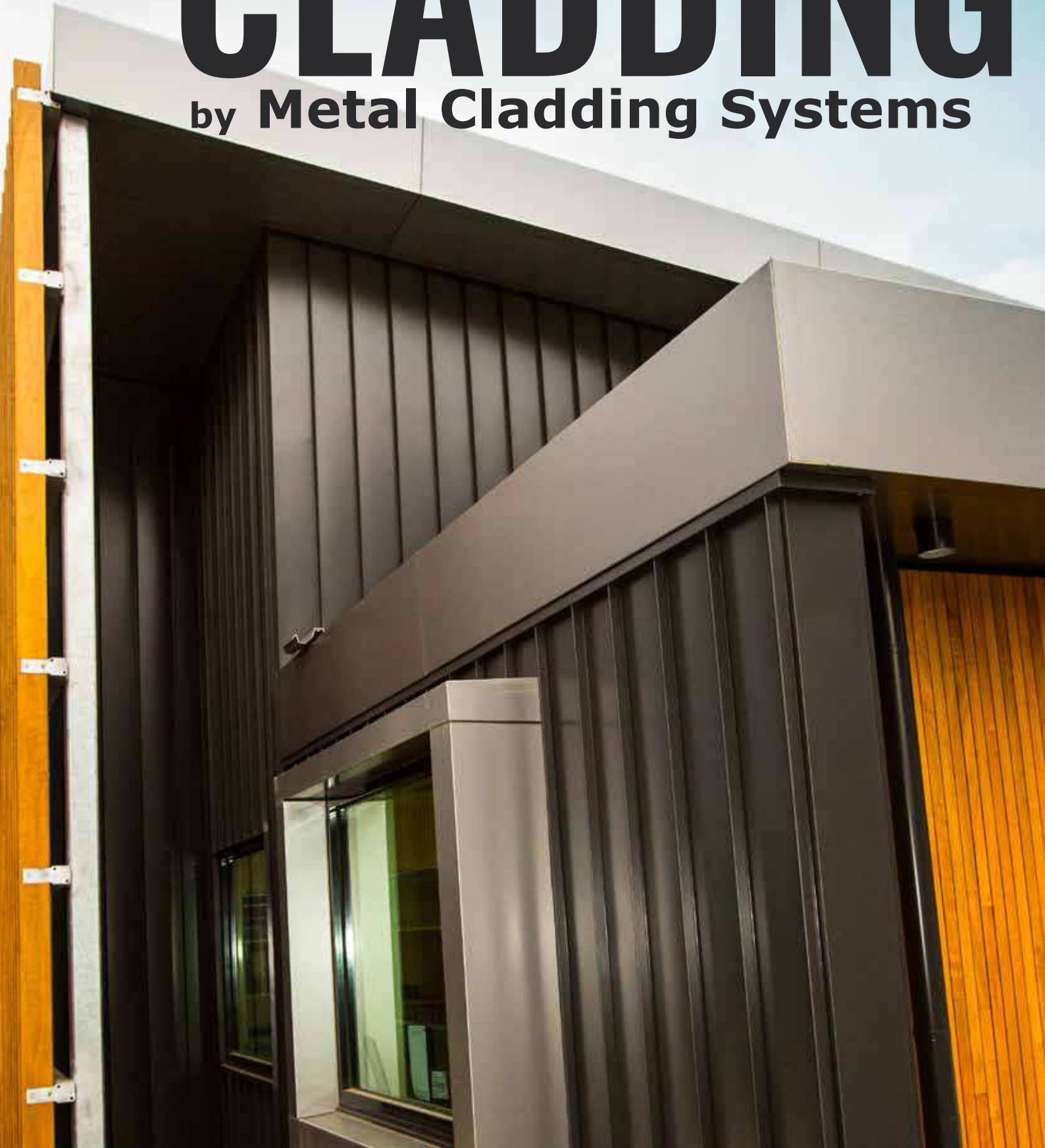




METAL CLADDING

by Metal Cladding Systems





**Remember the
cladding you
loved on that
building you
saw?**

**Chances are we
made it.**

Metal Cladding Systems Pty Ltd. (MCS) have been fabricating architectural cladding profiles since 1996. A sister company to Bayside Flashing & Ventilations Pty Ltd., Metal Cladding Systems is backed by more than 30 years of sheet metal manufacturing experience.

Working on an extensive range of projects, from Melbourne's largest and most iconic architectural developments, to private residential extensions and new builds, we proudly offer every project superior craftsmanship and expertise.

From day one, product has been supported by unparalleled customer service. Today Metal Cladding Systems remains owned and operated by its founding directors, ensuring quality and dedicated service is still, and always will be, central to the business.



At Metal Cladding Systems we pride ourselves on our ability to produce the highest quality architectural cladding systems in our market.



Projects: Standing Seam in Black Aluminium on Acute House, Flatlock in eZinc Slate on Clarence Houses, Interlocking in Black Aluminium on Reed Street Units.

**We like variety,
so we've made sure
you have options.**

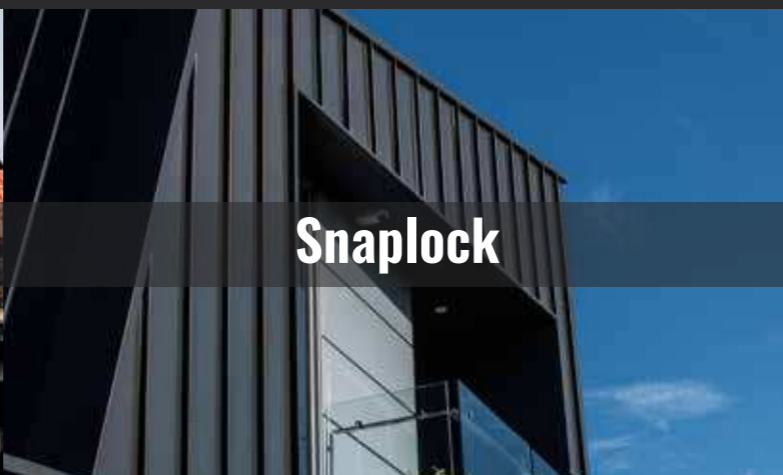
Lots and lots of options ...

Project: Interlocking in COLORBOND®
Manor Red® on O'Grady Street House.

Materials: COLORBOND® | Aurubis | eZinc | GALVABOND® | Rheinzink | Vestis | VMZINC | ZINCALUME® | zintek®
Aluminium | Brass | Copper | Galvanised Steel | Stainless Steel | Steel | Titanium Zinc | Weathering Steel (Corten) | Custom materials on request



Standing Seam



Snaplock



Flatlock



Cassette Panel



Interlocking



Nailstrip



Batten Seam



Shingle

**Speak with
someone who
can answer all
your questions.**

Talk to us.

If there's one thing we love, it's talking about cladding. We have in-house experts, specialising in manufacturing practices, installation advice, material performance, architectural design, specification, profile selection and project suitability.

There's no point in keeping all the juicy information to ourselves; we welcome all enquiries. Architects, builders, installers and homeowners, we're here and ready to assist in creating the metal cladding facade you seek.

*System selection, material specification, product limitations, installation requirements, product availability, samples - **whatever you need, we've got it.***



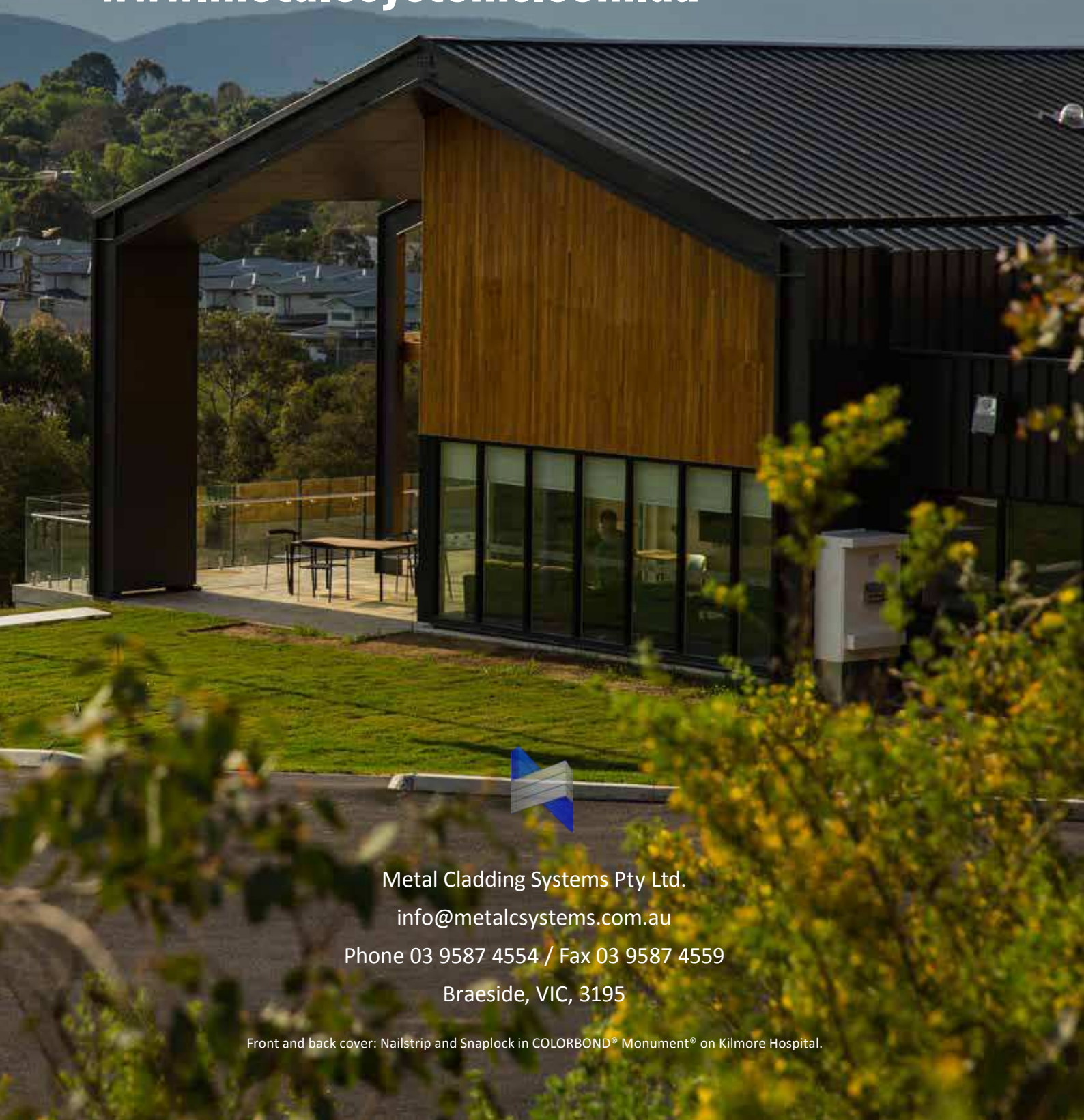
Project: Interlocking in COLORBOND®
Woodland Grey® on George Corner.

Project: Standing Seam in COLORBOND®
Wallaby® on York Apartments.



**Everything you need,
accessible anywhere,
anytime.**

www.metalcsystems.com.au



Metal Cladding Systems Pty Ltd.

info@metalcsystems.com.au

Phone 03 9587 4554 / Fax 03 9587 4559

Braeside, VIC, 3195

Front and back cover: Nailstrip and Snaplock in COLORBOND® Monument® on Kilmore Hospital.